



I 16 HUNTINGTON

BACK BAY

116HUNTINGTON.COM

116



Columbia  
Property Trust

Columbia  
Property Trust

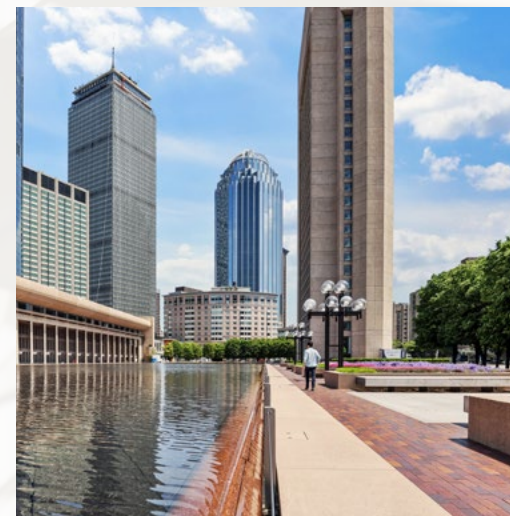
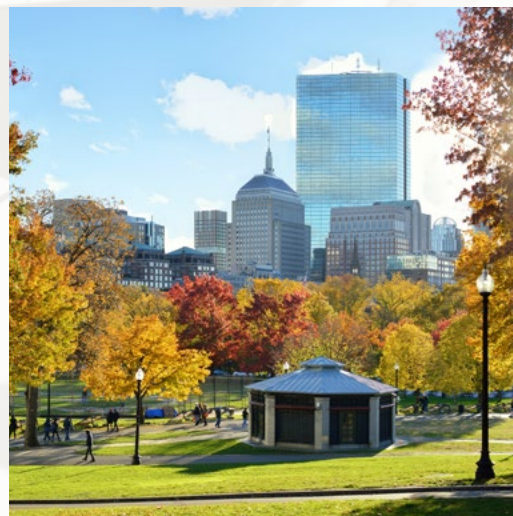
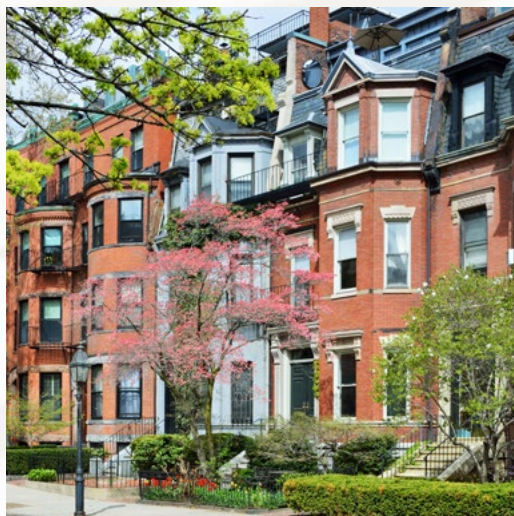




## A CLASSIC BOUTIQUE BACK BAY OFFICE



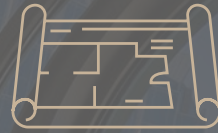
A timeless classic in the heart of Boston's Back Bay on Huntington Avenue. With Copley Place and the Prudential Center next door, 116 Huntington is in the heart of an active neighborhood with premier restaurants, shopping, and hotels.



# A TIMELESS CLASSIC FOR TODAY'S FUTURE



15-story, 270,000 SF  
Class-A Office Building



Efficient  
Floorplates



Central Back Bay  
Location



Bipolar  
Ionization



Ground-Floor  
F&B Amenity



WELL  
Health-Safety Rated



24 Hour  
Security



On-Site  
Parking



Accessible  
Transit



WiredScore  
Platinum



## A DYNAMIC LOCATION IN THE BACK BAY



116 Huntington is steps from countless shops, hotels, major corporations and landmark Boston attractions such as the Prudential Center, Boston Common and Freedom Trail. Across the street, pedestrian sky bridges conveniently connect Copley Place shopping and dining with The Westin Copley Place, Marriot Boston Copley Place and Sheraton Hotel. Also nearby is the luxurious and historic Fairmont Copley Plaza. The Back Bay subway and train stations are just a short walk away and the area has excellent access to commuter rail, bus, Orange and Green MBTA lines, Massachusetts Turnpike and Route 93.

## ONSITE AMENITIES

Enjoy 116 Huntington's modern amenities and conveniences – grab a coffee or bite to eat without leaving the building at Jaho coffee, accessible in the lobby. Or enjoy lunch or dinner and drinks at the new restaurant coming soon to the ground level.



# NEIGHBORHOOD MAP



18 RESTAURANTS

20 SHOPPING

13 HOTELS

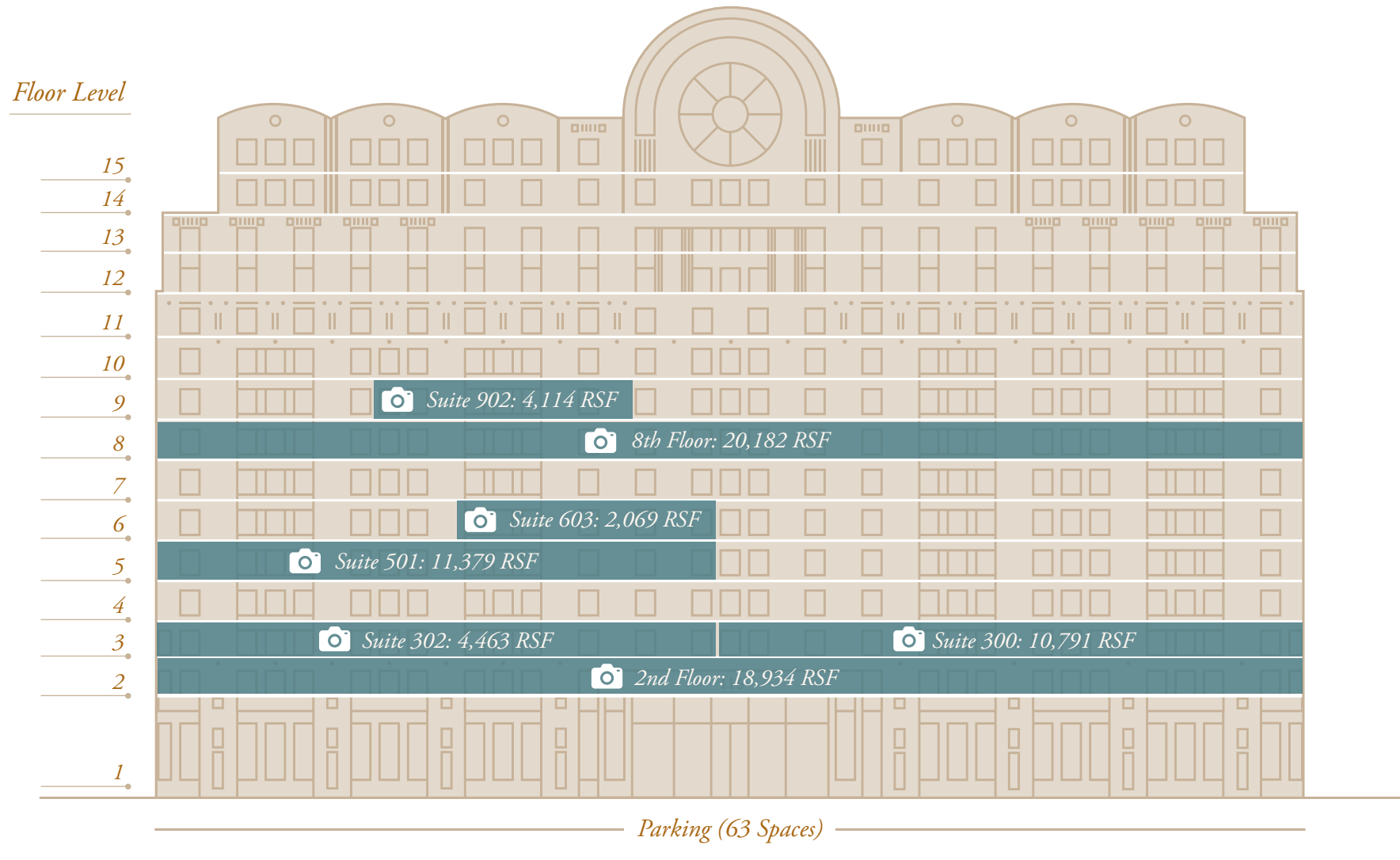
16 HEALTH & WELLNESS

TWO-STORY  
ATRIUM WITH  
LOBBY ACCESS TO  
JAHO COFFEE AND  
DIRECT ELEVATOR  
ACCESS TO ON-SITE  
PARKING GARAGE





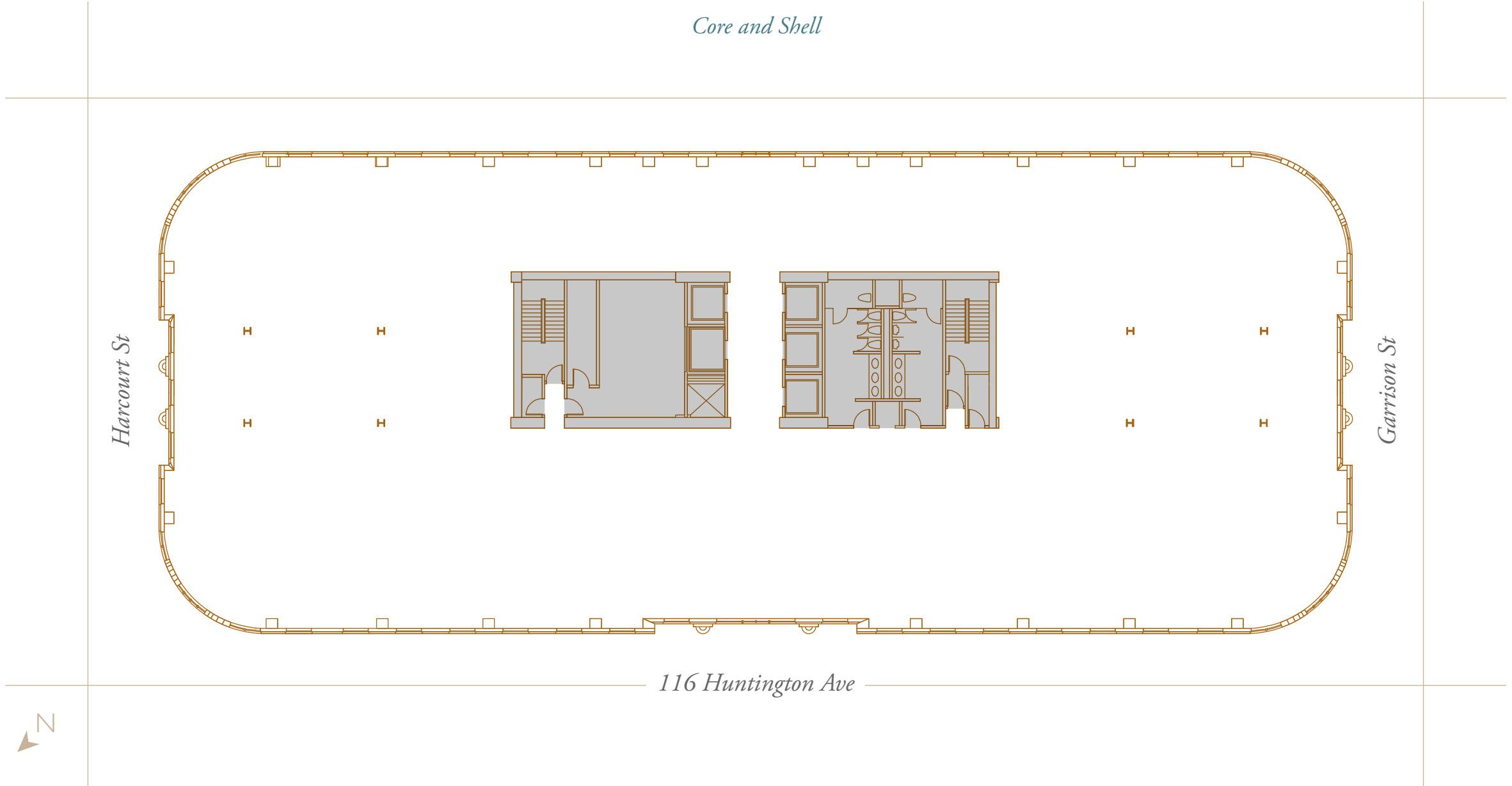
# AVAILABILITY



■ *Available*

# TYPICAL FLOOR PLAN

## *Core and Shell*

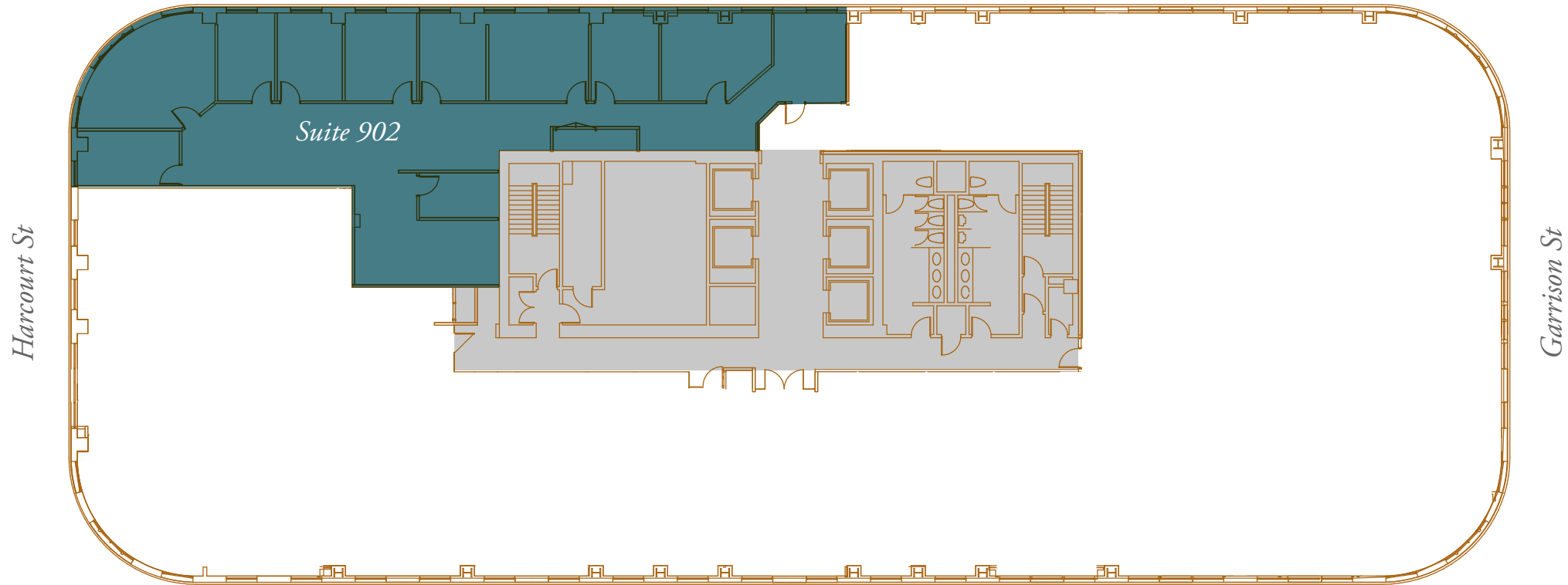


# 9TH FLOOR

*Suite 902 - 4,114 RSF Available*



VIEW SUITE 902



*116 Huntington Ave*

**SUITE 902**

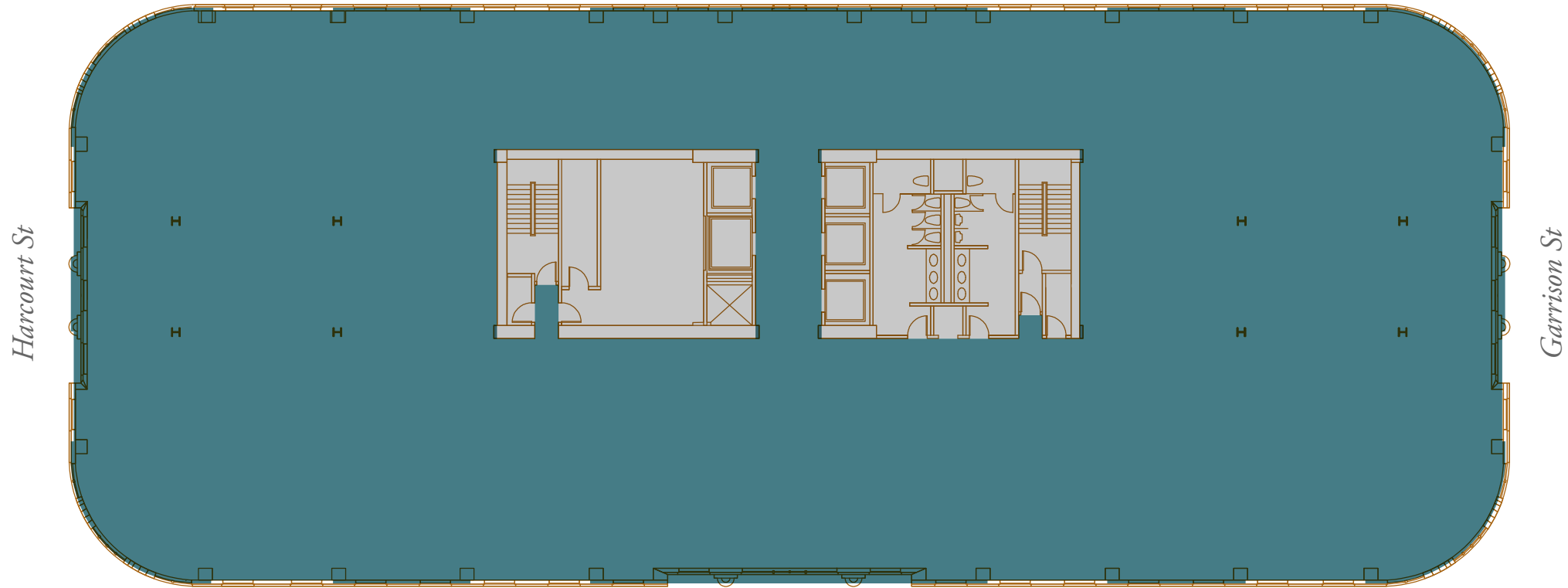
- Available Immediately
- Administrative office, perimeter office and conference intensive

# 8TH FLOOR

*Entire Floor - 20,182 RSF Available*



VIEW SUITE 801



*116 Huntington Ave*

SUITE 801

- Available Immediately
- Open floor plan
- White box / Clean shell with polished concrete floor

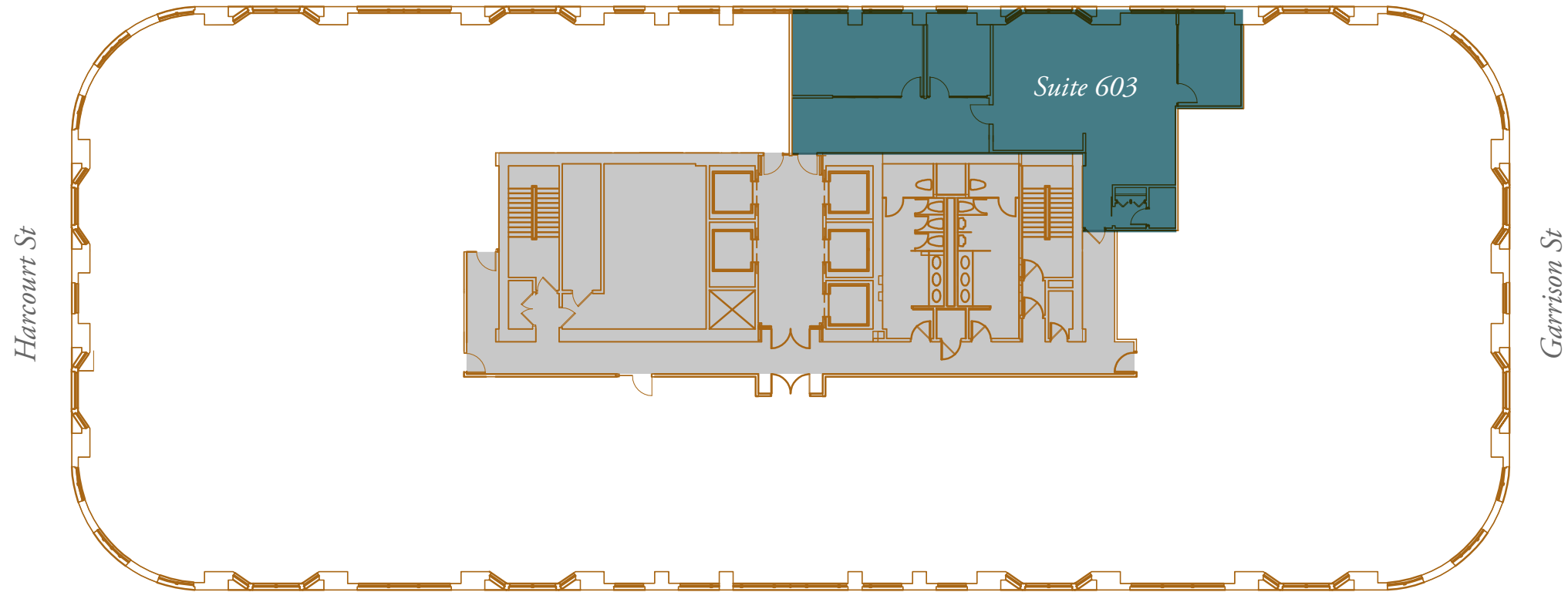


# 6TH FLOOR

*Suite 603 - 2,069 RSF Available*



VIEW SUITE 603



*Harcourt St*

*Garrison St*

*116 Huntington Ave*



SUITE 603

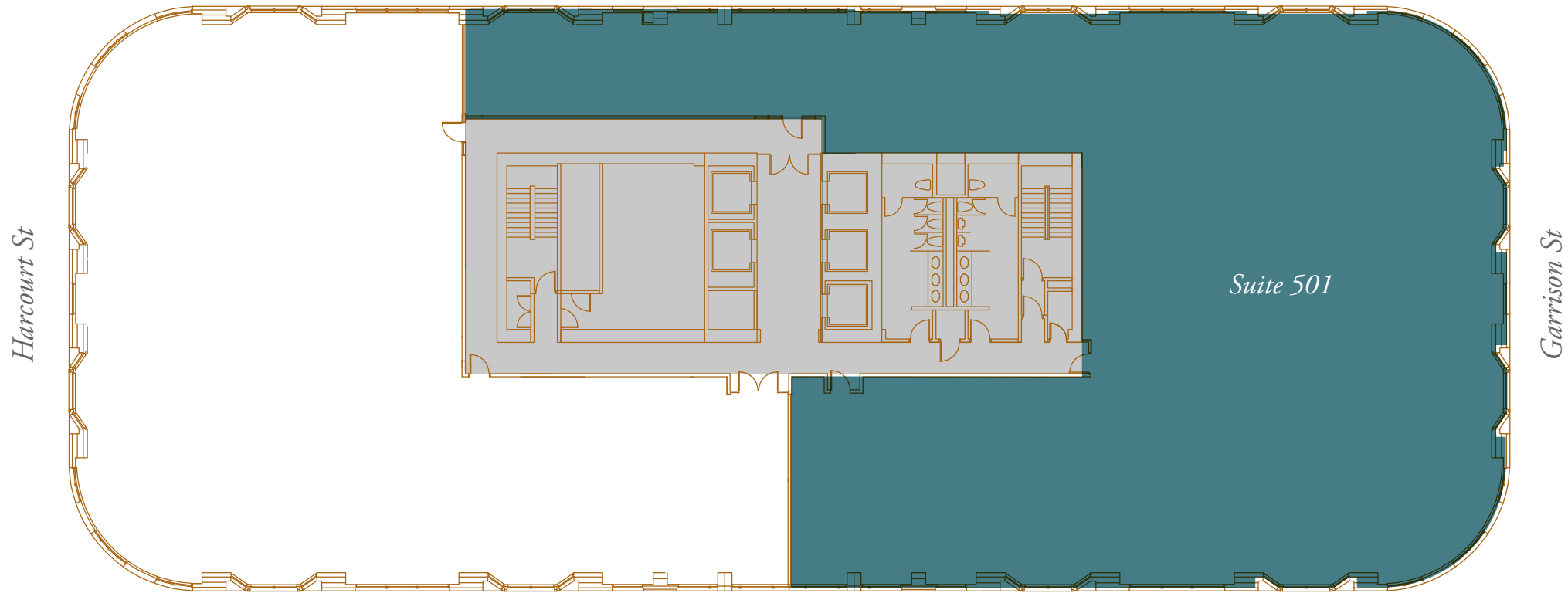
- Available Immediately
- Furnished with a large conference room, two offices and eight workstations
- Modern buildout, glass front, open ceiling

# 5TH FLOOR

*Suite 501 - 11,379 RSF Available*



VIEW SUITE 501



*Harcourt St*

*Garrison St*

*Suite 501*

*116 Huntington Ave*

SUITE 501

- Available Immediately
- Administrative office, perimeter office and conference intensive



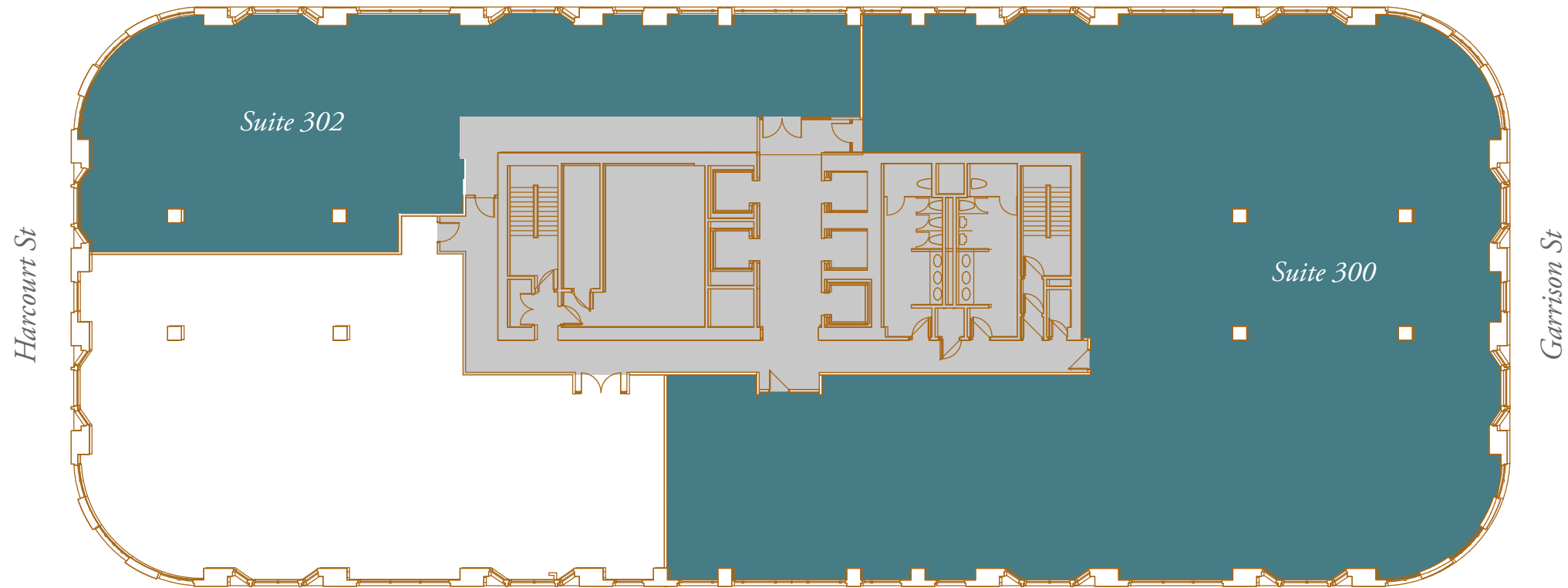
# 3RD FLOOR

■ Suite 302 - 4,463 RSF Available

■ Suite 300 - 10,791 RSF Available

  
VIEW SUITE 302

  
VIEW SUITE 300



Harcourt St

Garrison St

116 Huntington Ave

Suite 302

Suite 300



SUITE 302

SUITE 300

- Available Immediately
- Opportunity to combine with Suite 300

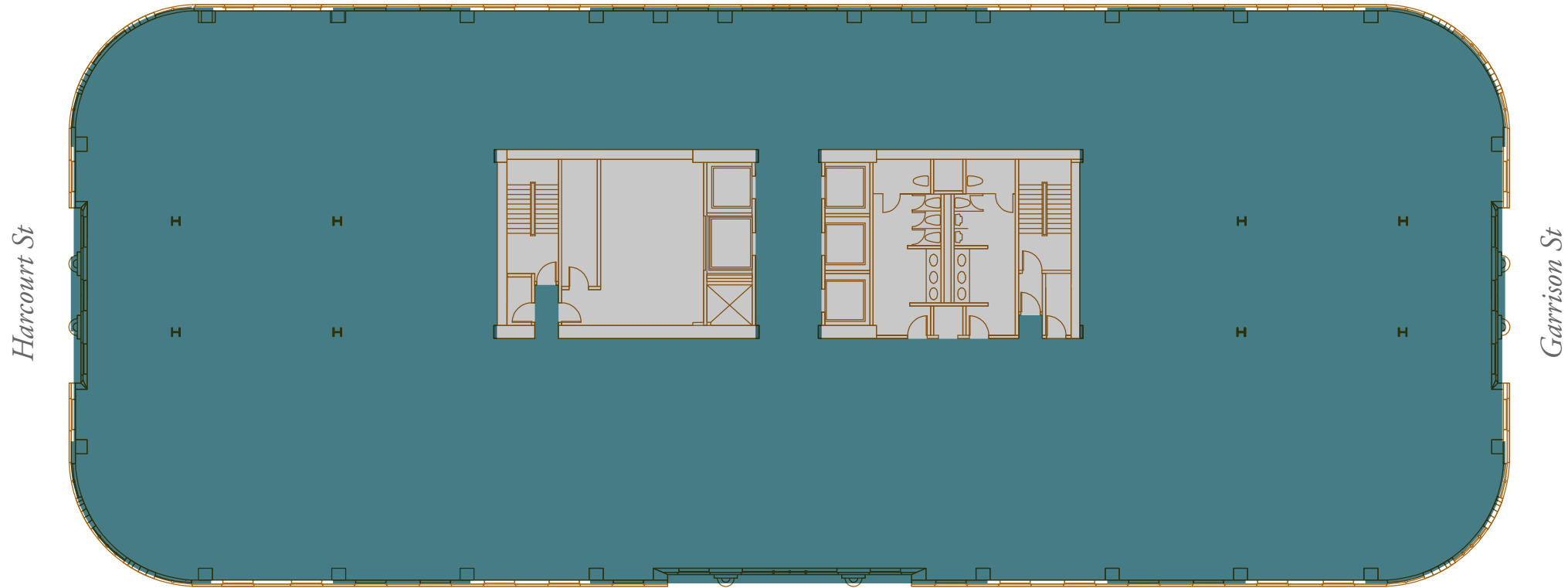
- Available Immediately
- Administrative office, perimeter office and conference intensive

# 2ND FLOOR

*Entire Floor - 18,934 RSF Available*



VIEW SUITE 201



116

Huntington Ave

SUITE 201

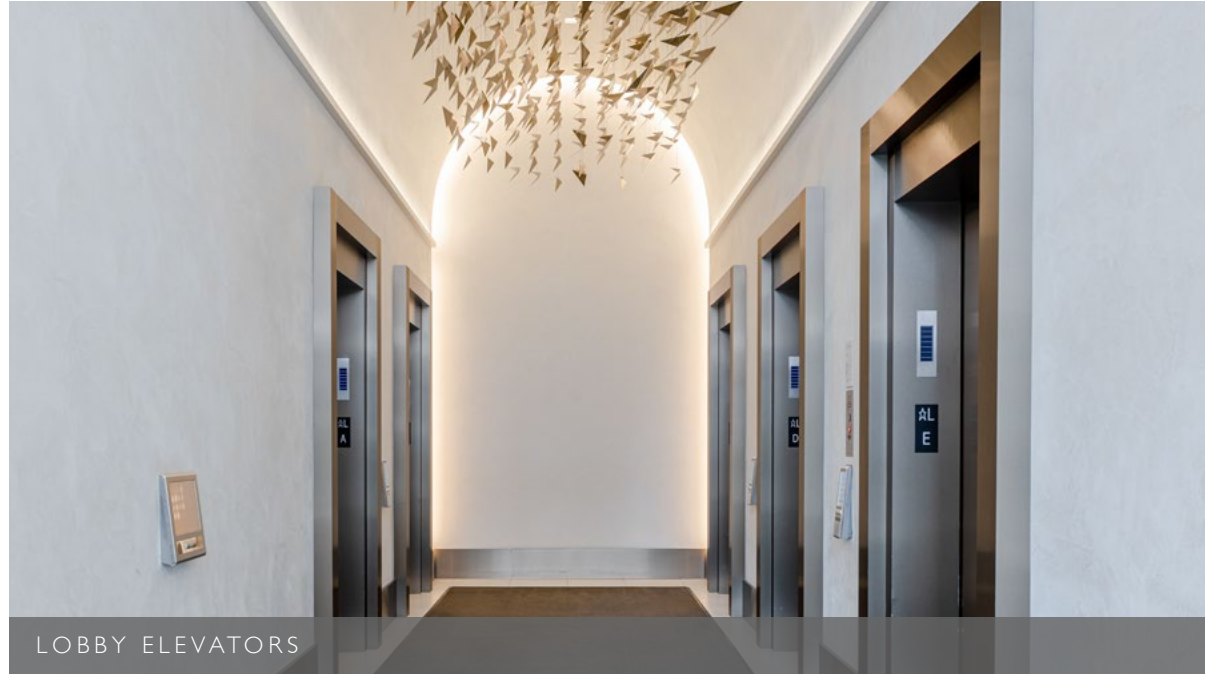
- Available Immediately
- Perimeter office and conference
- Open floor plan



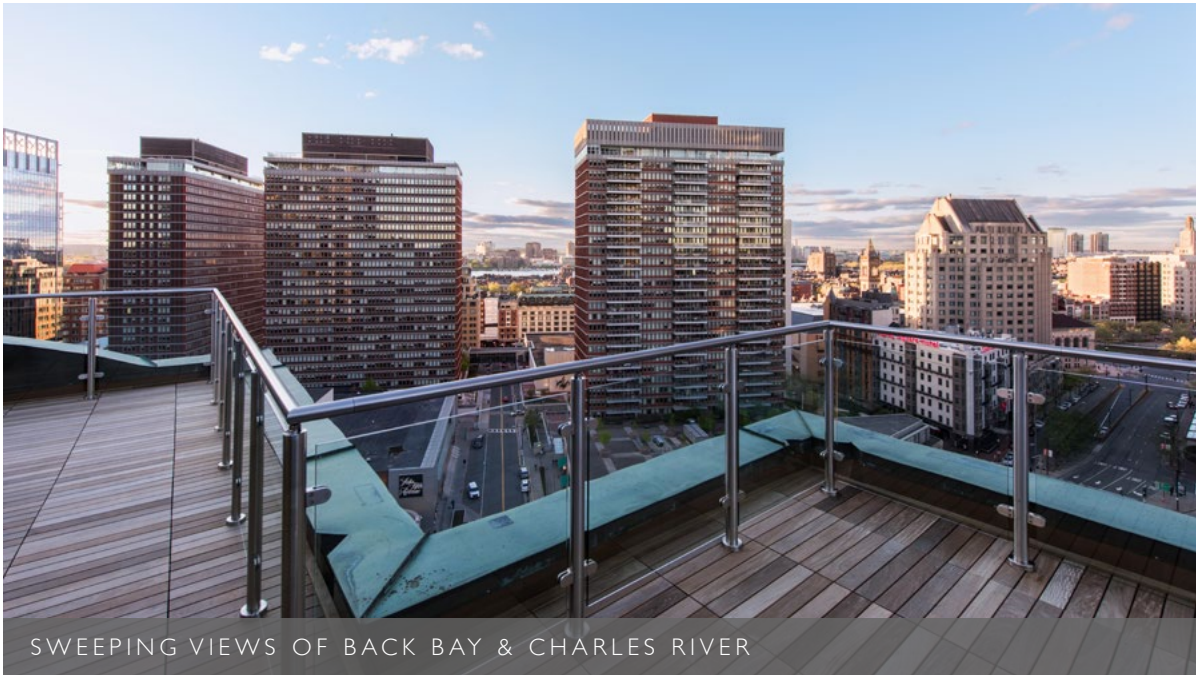




TAILORED LINES & MODERN AMENITIES



LOBBY ELEVATORS



SWEEPING VIEWS OF BACK BAY & CHARLES RIVER



JAHO COFFEE



116

JAHO





116 HUNTINGTON AVE  
BOSTON, MA 02116

Dan Cavanaugh  
617.694.9010  
Dan.Cavanaugh@jll.com

Patrick Nugent  
781.718.5085  
Patrick.Nugent@jll.com

Maeve Cleary  
781.879.3136  
Maeve.Cleary@jll.com



116HUNTINGTON.COM